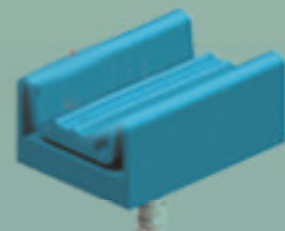
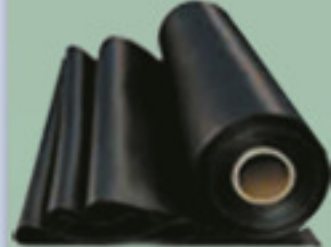


Nalin Rubber

Private Limited

AN ISO:9001 & ISO:TS16949
CERTIFIED COMPANY





Introduction

Our founder Chairman Mr. R.K Sinha, an eminent Rubber Technologist established Nalin Rubber Private Limited at Jamshedpur in 1988 in close associations with TATA's. Serving eminent Industries in India for more than 25 Years, Nalin Rubber has evolved to a prominent technology driven Rubber Company having high ethical human values which delivers vast range of Rubber Products and services to a variety of industrial applications. Spread on more than 7500 square meter land, the company has large range of modern machines, equipment and industrial technologies in the related field. Various facilities available at Plant & office includes: Design Centre, Design Validation Laboratory, Laboratory, Mixing Plant, Injection Moulding Plant, Extrusion & Online Cure Plant, Hose Making Plant, Calendaring Plant, Metal Stamping Plant, Fitting & Machining shop, Painting shop, Welding shop, Lining Servicing Department, HR Department with Training Cell, Library, Conference Hall, Air-conditioned Administrative office with Lift Facility, In House Tool Room with Prototyping facilities, Key-employee residential complex etc.

Reliable & Quality Conscious Team Nalin is involved in following activities for customers:

- Design & Development of Rubber Products
- Innovation of Process & Products in fields related to Rubber
- Production of variety of Rubber Products & related Accessories
- Inspection Testing & Re-Engineering Rubber Products
- Sales and Services related to Rubber Products

Clients

Nalin Rubber has offered designs, products and services for following applications to some of the prominent customers:

- Automotive Applications
- Railway Locomotive Applications
- Railway Coaching Applications
- Earth Movers & OTR Applications
- Aircraft Applications
- Defence Applications
- Steel Applications
- Mining Applications
- Nuclear & Power Generation Applications
- Infrastructure Industry Applications
- Construction Industry Applications
- Naval Applications
- Industrial & Hydraulic Applications
- Consumer Goods



Achievements, Awards & Quality Standard

Certification

Nalin Rubber is an ISO-TS 16949 and ISO 9001: 2008 certified system driven company. Company is also certified by many Government agencies including NSIC (National Small Industries Corporation), RDSO (Railway Development & Standardisation Organisation, Indian Railways), DGQA (Director General of Quality Assurance, Indian Defence) for specific items. Efficient quality organisation has officials awarded for six sigma green belts from ACMA-Cummins and design team has been awarded for their innovations by Tata Motors Limited at Innonite and appreciated by DRDO. Further, many customers have rendered self certification status to Nalin Rubber. Some high safety Indian Railways Items have been Awarded Part I status. Rewarding our timely delivery and efficient support Tata Motors Spare Parts Division has entrusted us with VMI (Vendor Managed Inventory) Status.

Quality Policy

Nalin Rubber is committed to Design, Development, Production, Testing, Sales and Service of Quality Rubber & Metal Products for its utmost customer satisfaction through consistency in products provided at competitive rates with timely & prompt delivery and continuous improvement. The company shall strive to maximize customer satisfaction through enhanced Reliability in Product, focused Team Work and improvisation in customer relationship.

Polymers used

Various Polymers used at Nalin rubber includes:

- Natural Rubber
- Nitrile (NBR, HNBR, XNBR)
- Chloroprene (Neoprene)
- EPDM & EPR
- Silicone (MQ)
- Styrene Butadiene Rubber (SBR)
- Butadiene Rubber (BR)
- Butyl & Halo Butyl (IIR, BIIR, CIIR)
- Fluorocarbon Rubber
- Chlorosulphonated Rubber (Hypalon)
- Chloro Poly Ethelene Rubber (CPE)
- Fluorosilicone Rubber
- Polyurethane (Millable Grades) (AU, EU)
- Poly Acrylic Rubber (ACM)
- Vinyl Acetate Rubber (Vamac)
- Epichlorohydrin Rubber (ECO)
- Thermoplastic Elastomers
- Recycled / Reclaim Rubber
- Polyphosphazene Rubber (PZ, FZ)
- And specialty polymers

Standards Followed

- ASTM standards (American)
- I S Standards (Indian)
- JIS standards (Japanese)
- DIN Standards (German)
- British Standards (British)
- RDSO standards (Indian Railways)
- AAR (Association of American Railroads) Specs.
- SAE Standards (Society of Automotive Engineers)

Certifications

ISO/TS 16949: 2009
Certified by



Awards

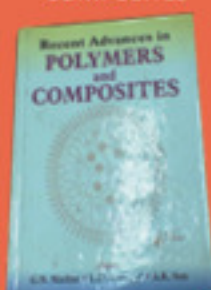


Various Published Articles



Articles Published

POLYMERS AND COMPOSITES



Nalin Rubber Private Limited



Products

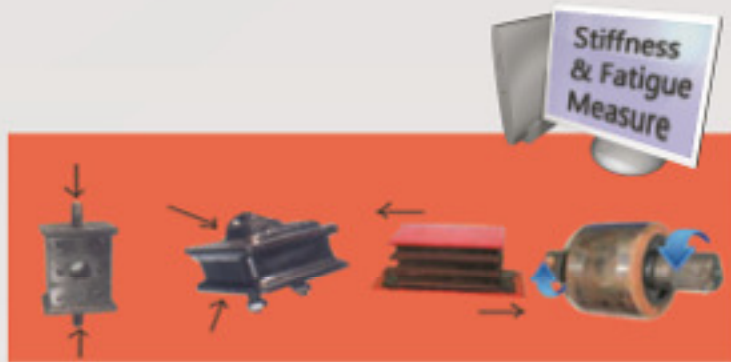
Mount & Vibration Isolators Family

Nalin Rubber has developed and supplies anti-vibration Pads, Mounts and Isolators for various applications including Automotive, Railway, Construction Equipment, Defence (including Missiles launcher pads), Aerospace & Aircraft, Industrial and under water usage. The company has Design capabilities with Design Validation facilities including instruments to check Static & Dynamic Stiffness (Shear, Angular, Axial & Torque), Load Deflection, Metal Rubber Bond Strength, Endurance & Fatigue Test, Cyclic Endurance Test, Impact Hammer Test, Low Temperature Brittleness Test, Saline Water Reaction Test and others on actual product. Nalin has in house facilities for insert production also.



Hydro Mounts Family

Hydro Mounts is a Rubber Mounts coupled with a piston based dash pot having high viscous fluid. This enclosed mount can take sudden impacts due to top rubber mount as well as manage high and low frequency jerks due viscous fluid dash-pot. This has immense application where there are critical degree of vibrations coupled with other stresses such as Heat etc.



Metal/Plastic/Textile Reinforced Family

A range of Rubber Based composites have Plastic, metal or textile reinforcement used for various applications including Silent Bushes, Couplings, Mats, Toughened Bushes, Buffers, Shockers, Track Chain pads, Draft gear Pads, Marker Pole, Brackets, Couplings etc.





Products

Suspension Bush Family

Nalin Rubber has developed various suspension bushes & anchor link assemblies for railway and automotive industry, these are tested for torsion test and have good bonding properties



Tuneable Mounts Family

Nalin Rubber has developed magneto-rheological elastomer based externally tuneable mounts. The stiffness of these mounts can be varied and adjusted externally through electronic methods. These vibration dampers can be used in conditions where vibration frequencies and amplitude are varied in long ranges but comfort and dampening is required essentially.



Polymer Coated Clamps

Nalin Rubber has developed polymer coated [Epoxy powder coated and HAPA High Adhesion Polymer Alloy coated] clamps and metal assemblies. They have very long life without rusting and they do not give tearing effect to rubber hose, cables, nylon pipes etc. These are smart products for assemblies.





Products

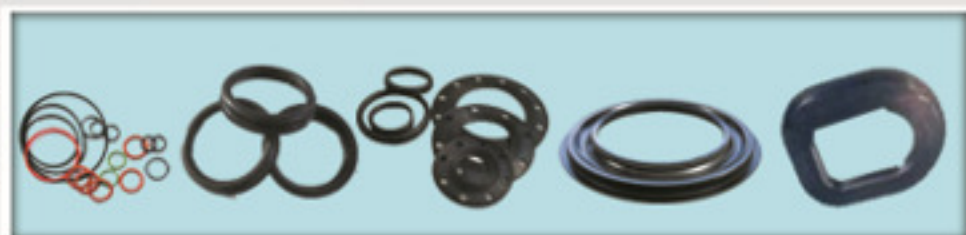
Bellows, Boots, Covers, Protective Caps Family

Wide range of Bellows, CV Boots, Covers, Protective Caps, Flexible Conduits etc. is developed and produced by Nalin Rubber for Various medium and applications. Some of these are metal / Plastic reinforced and some have textured surfaces and textile backings for tear resistance. Double walled bellows, Gear shift lever bellows and Base assembled bellows are also part of our wide bellow range.



O Rings, Gaskets, Seals Family

Nalin Rubber produces a wide range of O Rings, variable Section cords, Extruded Cords, Rings with predesigned Cross sections, Seals, Oil seals, Gaskets, Packings, Engine & Radiator Seals etc. Nalin Rubber also produces Tyton Gaskets for DI Water Pipe Lines which has same product with Dual Hardness in same piece.



Large Fan shroud Rings, Cords, Sealing Tubes Family

Nalin Rubber regularly supplies Large Fan Shroud Rings which upto dimensions more than 0.5 meter and sometime goes up to 20 meter length (6.5 meter dia). Capacity to manufacture special cross-section Cords and sealing Tubes.





Products

High Temperature/Oil Resistant Hose Family

Nalin Rubber has separate Production Plant for production of Coloured High Temperature Hoses which are normally made with Silicon/ Fluorosilicone / Vamac / Fluorocarbon Rubber with Nylon / Aramid (Nomex / Kevlar) Fabric Reinforced. These have been used for Turbocharger of Automobiles, Close to Furnace application's Hoses in Metal Industries like Tata Steel, Foundries and other industrial usages. Various sizes and shapes up to 0.5 meter diameter and 12 meter length have been developed for these items. Also it has been made in several colours and textures (glossy smooth to cloth textured finish) and in single and dual colour as per need.



Carbon Free Hose, LPG & Gas Hose Family

Carbon Free hoses are manufactured for special applications where electrically non conductive grades are required. Similarly we produce LPG & Gas supply hose as per SAE standards and individual customer requirements. These are mostly procured by Instruments OEM's and Industrial maintenance Industry.



Fuel Hose, Tubes, Catheters, Branched Hoses Family

Special extruded Fuel Hoses and Tubes are produced for Oil & Pneumatic applications from 1 mm bore diameter to 100 mm with single or dual layer (Inner & Outer layer different Rubber) polymers from Cold Feed Extruders (Straight & Cross Head). These hoses / Tubes are assembled and moulded to make branched hose for fuel/fluid distribution if required.





Products

Low Pressure Moulded & Injection Moulded Hose Family

Nalin Rubber produces a large number of moulded & Injection Moulded Rubber Hoses. Some of these have predesigned ribs for better collapse & Burst Pressure Resistance, Clamp End Holders for grip etc. Multiple bend hoses are also made in this category. Mostly EPDM, Chloroprene, Nitrile, PVC Nitrile, Epichlorohydrin, Vamac, Chloropolyethylene (CPE), Silicone & Fluorocarbon Rubbers are used for this category.



Low Pressure Braided & Knitted Bend Hoses Family

Low Pressure (normally up to 20 Bar) Bend Hoses have crucial role in areas where there is less space and critical connectivity of fluid lines. Engine, Radiators of Automotives and Power Generators have regular requirements of these hoses. These have inbuilt reducers, bends and other facilities and it's easier to fit than using multiple metal fittings. These can be easily coupled and sometimes pre-moulded with metal end fittings.



Spiral Wire Reinforced Hose Family

Special Hoses made on SPM's (Special Purpose Machine) using Hose Tubing, Calendered Fabric and Spiral Spring wire reinforcement are used for making rugged Hoses for Air outlet in Commercial Vehicles, Industrial Machines and pneumatic outlets. These are made for lengths up to 2 meter and diameter up to 300 mm. They have good friction and tear resistance and have very high collapse strength suitable for open use for suction hoses.





Products

High Pressure Hydraulic (SAE) Hose Family

Nalin Rubber offers a wide range of SAE Hydraulic Hoses under Brand "NILU" which are Rayon / Polyester / Wire Braided from Inner diameter 1/4 Inch to 2 Inch diameter (Normal ID Inch Sizes: 1/4, 5/16, 3/8, 13/32, 1/2, 5/8, 3/4, 7/8, 1, 1 1/4, 1 1/2, 2)



Standard SAE Categories manufactured at Nalin Rubber are:

- NILU- SAE 100 R1- 1 Wire Braided Hydraulic Hose with Rubber Cover
- NILU- SAE 100 R2- 2 Wire Braided Hydraulic Hose with Rubber Cover
- NILU- HI-22-2 Wire Braided Hi Impulse High Pressure Hydraulic Hose
- NILU- NCB-174 Double Wire Braided Hose
- NILU- SAE 100 R3-2 Rayon Braided (Non Metallic) Hydraulic Hose
- NILU- SAE-100 R4-2 Rayon Braided 1 Spiral Wire Hydraulic Hose
- NILU- SAE-100 R5-1 Wire Braided Hydraulic Hose with Cotton Cover
- NILU- SAE-100 R6-1 Rayon Braided Low Pressure Hoseng Hose
- NILU- High Temperature Steam Hose- 1 Wire Braided
- NILU- High Temperature Steam Hose- 2 Wire Braided
- NILU- 3 Wire Braided Hydraulic Hose with Rubber Cover
- NILU- Braided Air Hose
- NILU- Braided Pneumatic Hose
- NILU- Braided Rock Drill Hose
- NILU- Liquid Petroleum Gas Hose (Type: IS: 9573 BS 4089)
- NILU- Petrol Hose EN 1360-3 / BS-3395-3 Hard Wall
- NILU- Petrol / Diesel Dispensing Hose (IS: 2396:1989 / BS 3395-1) Soft Wall
- NILU- Aircraft Refuelling Hose (EN: 1361: 1997 / IS:5797:1994)
- NILU- SAE J51 Type A2 Automotive Air Conditioning Hose

Apart from these Nalin Rubber produces other standard Hydraulic Hoses on demand from customers.

Crimped Hose Assemblies with Fittings Family

Nalin Rubber also produces and supplies Hose assemblies and Hose Fittings as per customer requirements. Hose crimping are tested on required high Pressures and cyclic pulsating pressures to confirm reliability and long life. If Low temperature or High temperature requirements are required, Hose assemblies can be tested in our Laboratory under desired conditions.



Machined Hose Fittings Family

Hose fittings produced at our Sister Concern and assembled at Nalin Rubber. If required additional Metal Hose Fittings, O Rings, Packings, Washers, Clamps, Teflon Gaskets etc. can be provided to customer against orders.





Products

Buffers, Bushes, Grommets & Stoppers Family

Large number of moulded goods are produced for usage as Buffers to take sudden shock / impact or vibration during equipment functioning; Bushes for supporting rotational motion during motion ; Grommets for temporarily fixing a hole otherwise needed or for supporting cable against tear cut from metal during usage and Stoppers to provide soft ends to linear motion of an equipment parts.



Inflatable Seal & Inflatable Tube Family

Nalin Rubber is popular Indian Inflatable Seal producer since 15 years for design & variety. In fact Nalin is the first South East Asian Company to produce Inflatable Seals for Nuclear Reactor purpose & was appreciated by DRDO for their design & development efforts. Developed Sizes ranges from small moulded rings (up to 0.5 m Dia) to huge Extruded & assembled sizes where the length can be as high as required (Supplied up to 20 meter Length pieces).

New range includes High viscous fluid filled & Multi Layered Inflatable Seals which self adjusts to variable sealing gaps & can self maintain by curing small punctures. These are normally available in EPDM, Nitrile, Neoprene, Silicone, Vamac, Fluorocarbon & Fluorosilicone Rubbers. The extrusion facilities is also used for making Inflatable Tubes for special racing bicycle Tubes from Butyl Rubber and Natural Rubber.



Track Chain Pads & Solid Tyre Family

Nalin Rubber produces Track Chain pads of Excavators & Back Loaders (OTR) for customers like Hitachi & BEML. These are High friction Resistance Shoe Pads. Solid Tyres produced for wheel barrow & forklifts are used in mines. our Couplings tyre are used in mechanical transmission in mines. High Temperature Coupling Rubber used for Tata Motors Engine is also produced regularly by Nalin Rubber.





Products

Calendared Sheet Family

Nalin Rubber has Calendar Lines upto 66 inch (1.68 Meter) Width to produce Rubber sheeting in thickness range 1 to 25 mm from various steam cured rubber polymer. Available in various colours (Black & Red Common) with Plain & ribbed surfaces with/ without textile fabric lining reinforcement in single / multiple layers. Sheet thickness is monitored online for minimum variation. Nalin has modern Calendar line of Farrel, USA make with Chiller & steam lines for digital temperature roll heat management. System is equipped with digital speed controls. Available Ranges includes High ozone & Corona Resistant for industrial lining, Conveyour & Mining Sheet, Low Cost Cattle shed Sheet, Roof Lining sheet, acoustic shielding sheet and EMI (Electro Magnetic Interference) shielding sheets.



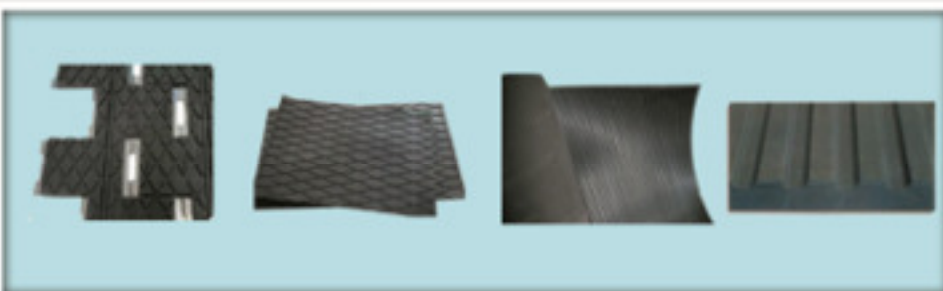
Extruded Ribbed Sheet Line



Farrel Calendar Machine

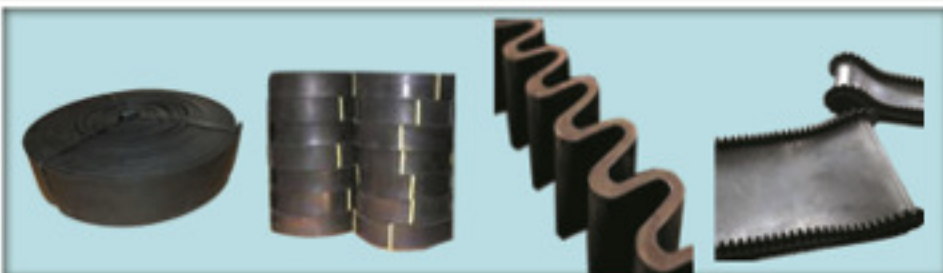
Moulded & Grooved Sheet Family

Nalin Rubber produces Moulded Sheets and grooved sheets which have normal surfaces of Diamond Groove, Ribbed Groove and Spotted circle Groove etc. which can be moulded with customer monograms in variable shapes up to 2 meter width and variable length (Normally 10 meter for high thickness and 20 m for low thickness). Many of these are supplied with Textile Fabric reinforcement which is either Cotton, Polyester, Glass wool or Aramid (Kevlar) as per specification.



Skirts, Mats, Lining Family

Skirts of Conveyor lines, Huge Mats and Lining sheets are also produced at Nalin Rubber. Unvulcanized Lining are also taken up for onsite Tank Lining and tool lining if required. Sheets are used for steam cured in-house Roll Lining, Tank Lining, Tools and Tackle lining etc. Skirts are also manufactured by extrusion method for complicated shapes. Floor Groove Holders for electrical purpose have been produced for global requirements.





Products

Rubber Beading Family

Nalin Rubber offers a wide range of Microwave Online Cured Rubber Beadings and Profiles extensively used in Doors, Windows, Bonnet & Body of automotive, Railways, Aircraft and Buildings. Nalin has online facility for Infra Red & Microwave Curing with Hot Air Tunnels for Hands free fully Automated Production Line. Railway Coach Door & P seals of aircrafts are manufactured with injection moulded corner joints. EPDM & Silicone Profiles with 3M tape to directly peel and paste on Metal surfaces are also available. Nalin Rubber has been awarded at Tata Motors Innovation contest at INNOVATION NITE for innovative idea of sealing design on Door Profile.



Profiles with Metal Inserts & Flocking Family

Various window profiles are made with metal stiffener plate which are shaped / bent as per requirement and have been flocked on inner surface to get velvet finish so that windows are wiped clean as they move. Also the Flock reduces surface resistance. Nalin is a regular supplier for Tata Motors Limited and Indian Railways (DLW included) for such items.



Special Extrudate Family

Various Multi layered I Seals, Twin layered (Hard & Sponge Rubber) with / Without Metal stiffener inserts, dual coloured extrudes etc. are made by special processing on Cold Feed Extrusion Lines with Online Microwave & Hot Air Lines using modified techniques. Plenty of such items are available at Nalin Rubber which is tailor made for customer requirements.



Nalin Rubber Private Limited



Products

Metal Stamping Family

Nalin Rubber has metal stamping plant (up to 250 Ton) which provides metal inserts (up to 12 mm thick) for its Rubber plants. This plant also produces lots of Washers, Stiffener plates, fabricated brackets, Fenders, Chassis Body parts (Tata Motors Limited), Railway Coach & Wagon Metal parts etc. These can be fabricated with In house Tata Motor's approved Welding plant which has facilities for Spot welding, MIG & TIG Welding, Electric Arc Welding & brazing. Epoxy Powder Coating can also be done in house with Gallant make Plant for good aesthetics and surface protection of Metal Parts.



Metal Assemblies: Strap, Springs, Trailor Coupling Family

Large numbers of Metal Assemblies such as Air tank & Oil Tank straps, spring fitted Metal plates, Plastic bush fitted Couplings, Rubber Bush fitted Radiator Mounts & brackets etc. are produced as assemblies made primarily from metal parts. Family includes trailor coupling bush, radiator air protector for trucks and EMI moulded sheilding parts assembled with plastic backing.



Industrial Adhesive Family

Nalin Rubber offers a range of Industrial Adhesives made from Chloroprene AD (Neoprene) Rubber, Polyurethane and Poly Vinyl Chloride- Acro-Nitrile Butadiene Rubber with organic solvents. These are useful for industrial specialized purposes. The company is equipped with strainer and churners for adhesive manufacturing.

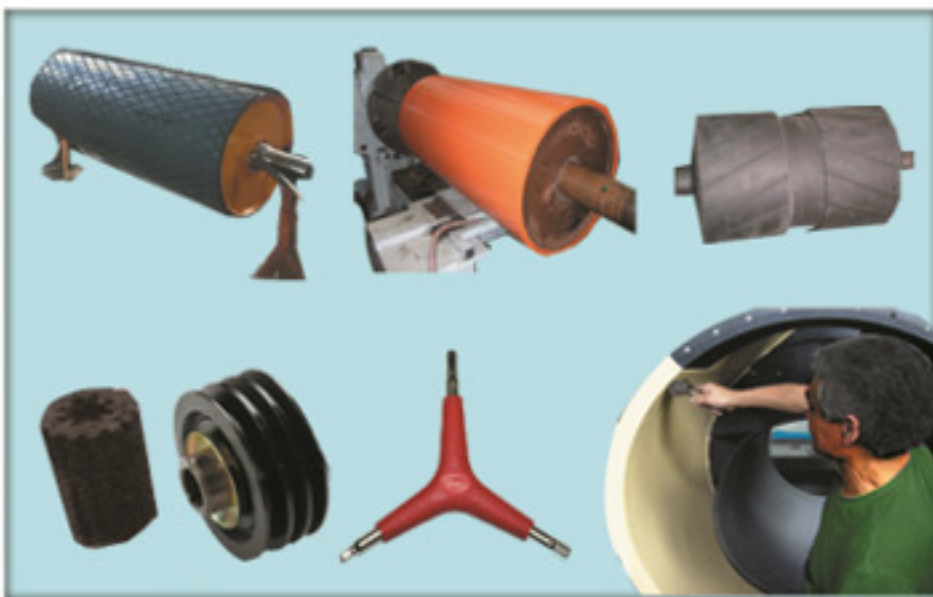




Products & Services

Roll / Tank / Pulley/ Equipment / Tool / Tackle Lining Family

The Roll Lining Department of Nalin Rubber Offers In House and On site Lining of Metal Rolls, Chemical Tanks, Heavy Equipments, Conveyor Pulley Linings, Special Tools & Tackles (for Ergonomic Advantage). We have experience in Lining Cold Roll Mills for Tata Steel, Tanks for various Industrial Applications, Floors for Exide Battery Charging Station and Tools & Tackles for Ergonomical advantages. These are done with both methods of Steam Cured and Room Temperature Vulcanite as per demand. Roll Grinding, Diamond Grooving etc. are also done as required In House. The linings are designed based on environment and chemical resistance desired for it.



Consumer Market Goods

Although Nalin Rubber has mostly developed Product ranges for Industrial Usages but recently some consumer articles have been developed for customers and much more development is expected in future. These includes articles like Wine Vacuum seal (Silicon), Tequila shot ice glass Silicon Mould, Perfumed articles, Excise Band etc. These are being developed and looked forward for online & Offline sales through channel partners.



Material Analysis & Compound Development: Technical Support

Nalin Rubber has an elaborate Material Analysis Laboratory and experienced Rubber Technologist Teams which have done Reverse Engineering & New Material Development Projects for Tata Hitachi, DRDO and many popular brands. The team has redeveloped new compounds for customers and have even worked on new Polymer compounding to select its ingredients and to make useful products from them as per demand. These technical Supports are provided to corporate clients on long term basis.



Material Analysis





Laboratory & Tool Room

Laboratory

Incoming Material Check Lab: Dimensional, Chemical Melting Point, Density, Viscosity

Dimensional Check Lab: Surface Table, Vernier Calipers, Bevel Protractor, Profile Projectors, Gauges (Thread, Radius, GO-NO Go, Groove, Thickness, Bore, Height), Scales, Dial Calipers etc.

Polymer Physical Property Lab: Tensile, Elongation, Tear, Modulus, Bonding etc.

Metal Lab: Rockwell & BHN Hardness Tester, Universal Testing Machines (3), Profile Projectors (3), Spark Test, Nugget Spot Weld Check, Fillet Test, Surface Finish Tester, Torsion Strength Tester, Elcometer for Paint & Plating Thickness

Microstructure Analysis: Computerized Digital Microscope

Chemical Reverse Engineering Lab: Detection & analysis for Polymer & Ingredients

Thermal Laboratory: Ageing Prediction, Residue Ash analysis, Fire & Flame Retardancy

Endurance / Fatigue Lab for Metal & Rubber, Moulded items, Hoses, Profiles .

Load-Deflection / Stiffness Check Lab

Aesthetic control Lab: Elcometers, Coat Guages, Gloss meter etc.

Low Temperature Test Lab (up to -70C): Brittleness test, Product Test

Compound Development Facility : Rheometer, Lab mill, Lab Press etc.

Hose Lab: Burst / Proof / Collapse Pressure /Vacuum Test, Hydraulic Test, Hose Thickness, Hose Bend, Hose Endurance or Pulsating pressure, Hose Low Temperature, Ply separation / Adhesion Test, Water / oil Absorption Test, Hose ID Test with Cone, Crimping Strength Test, Hose OD Increase under load pressure Test, Hose Wire Stripping Load Test, Hose Outer surface Rub check test etc.

Calendar Sheet Lab: Thickness Variation test, Electrical Resistance, EMI Shielding test.

Profile Testing Lab: Digital Insertion/ Exertion Load Test, CLD Bulb Test, Shower Test, Profile Endurance Test, Profile Low Temperature Test, Online Magnifying Glass Visual check, Profile Projector Checks, Adhesive Tape Strength Test, Flock Density Test, Rheological Test, Surface Resistance Test, Profile Metallurgical Tests

Weathering Tests Lab: Ozone Resistance, Cold Resistance (-70 C)

Design Validation Equipments:

Nalin Rubber has Dynamic testing facilities like Endurance and Fatigue Test equipments, Cyclic Endurance Machines, Tup Hammer Impact Testers, Low (upto -70 C) & High Temperature test Equipments which can test directly on Prototypes & actual Samples and these are used for design validation & Improvements.

Proto Shop & Tool Room:

Nalin Rubber has in house Tool Room for Moulds and Tool Development and also a Proto Shop which is used for producing Prototype samples for Metal & Polymer Products. The speed of development has been appreciated by beneficiaries wide over and praise articles have been published in journals & magazines such as ACMA, ACT.





Production Plant & Design Center

Production Plant:

Spread over 75,000 square Foot, Nalin Rubber Production Plants is divided in various departments and segments for better control.

Rubber Compounding & Mixing Plant: Internal Mixers / Kneaders, Mixing Mills, Poka Yoke Digital Computerized Ingredient Weighing, Bale Cutters, Cold Stock Room, Strip Cutter etc.

Rubber Molding (Compression, Transfer & Injection) Plant: Hydraulic Presses: Compression & Transfer, Injection Moulding Desma Make Machines, Continuous Sheet Moulding Hydraulic Presses, Corner Moulding Injection Presse, separate Metal Bonding Room with Sprays & Conveyorized controlled Drier Mc., Pre former Equipments etc.

Rubber Hose (High & Low Pressure) Plant: Cold Feed and Hot Feed Extruders (2" to 6") with Straight & Cross Head facilities, Steam Boilers (Oil Fired & Coal fired), Vulcanizers, Braiding Machines (Wire Braiding & Yarn Braiding), Knitting Machines, Hose Wrapping / De wrapping Machine, Hose Cutting Machines, Hose Crimping Bench, Automatic Hose Demandrelling Machine with Pressure Test, Buffing Machine for cleaning, Hose Finishing Equipments, Computerized screening and printing machine etc

Rubber Sheet Calendaring Plant: Calendars up to 66.5 Inch width (Farell).

Rubber Profile Plant: Microwave Online Cure Line upto 200 mm Dia, Infrared curing, Flocking Line, Metal Insert Profile online Bending Machine etc.

Sheet Metal Stamping Plant: Metal Power Presses

Welding & Fabrication Shop: Spot welding, CO₂ Welding, MIG / TIG & Electric Arc welding, Approved Welders

Metal Shop: Casting Fettling, Shot Blasting machines, Grinders etc. Machine shop: Drilling, Milling, Grinding, Lathe Cutting, Spring making/ coiling facility etc.

Finishing & Packaging Shop: Includes powder coating and spray painting

Other Facilities: Chiller Plant; Power Management & Generator (Alternate Power) Shop

Administrative Building: Air Conditioned Central Administrative Office with facilities like Library, Cafeteria, Guest Room, Lift & Wi-Fi etc.



Design Centre:

Nalin Rubber has design centre involved in designing Rubber Products for various organisations in varied fields. Company has been awarded and appreciated for design & Innovations by Government as well as Private Public Organisations. Nalin works for designing mostly Rubber compounds, Products and processes at its Design and R&D centre. Prototype making capabilities and Tool room has added advantages,



Socio-Cultural commitments:

Nalin Rubber has strong belief in clean ethical behaviour and we cherish working like Tata Code of Conduct. Company is involved in various Social Upliftment programs locally and are popular in region for its Social & Cultural Upliftment program participation.



Nalin Rubber Private Limited



Nalin Rubber
Private Limited



Contact Us

Map

Address

Works & Office: Plot B-10 & B-4, 6th Phase,
Adityapur Industrial Area, Gamharia,
Jamshedpur - 832108, Jharkhand, India.

Postal Address: Plot 29, Road No-4, Circuit House Area (Old),
Bistupur, Jamshedpur 831001, India.

Phone: 91-657-2200220 / 2200221

Fax: 91-657-2200221

Email: info@nalinrubber.net / nalinrubber@hotmail.com

Website: www.nalinrubber.com / www.nalinrubber.net



"Complete Package of Quality Rubber & Allied Products & Services"